

# Pennsylvania Ave Reconstruction



From left to right: JJ Saholt, Annika Diasabeygunawardena, KZ Marcos, and Colin Jungwirth

## PROJECT SUMMARY:

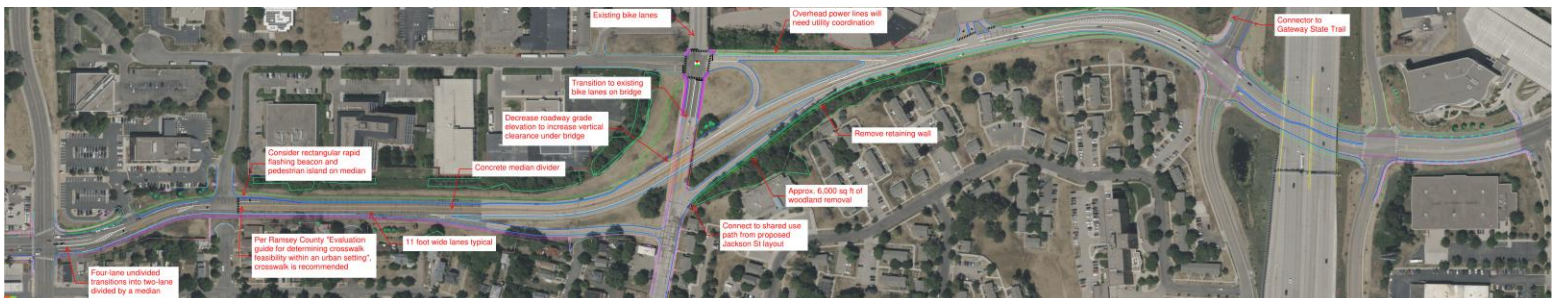
Pennsylvania Avenue is a 0.85 mile, four-lane urban arterial in Saint Paul designed for truck bypassing prior to the construction of larger highway systems. The pavement has deteriorated and lacks continuous pedestrian and bicycle facilities. The interchange at Jackson Street poses the biggest barrier for pedestrians and cyclists. The planned Purple Line Bus Rapid Transit (BRT) and the Jackson Street reconstruction may increase future use of the corridor.

This project focuses on creating a preliminary layout and cost estimates to improve multimodal connectivity, meet the area's traffic loads, and comply with environmental, pavement, and stormwater requirements.

## DESIGN GOAL:

Develop a comprehensive reconstruction plan for Pennsylvania Avenue (from Rice Street to Mississippi Street) that addresses its deteriorating pavement and improves pedestrian and bicycle connectivity.

### Final Layout



RAMSEY COUNTY  
Public Works

## TEAM 13

### INDUSTRY REPRESENTATIVE

Alan Maxwell

### FACULTY ADVISOR

Mingu Kang

## DESIGN CONSTRAINTS:

- Include safe, accessible pedestrian and bicycle pathways in compliance with ADA requirements and local design guidelines.
- Address current crash patterns and improve overall safety for vehicles, pedestrians, cyclists, and transit riders.
- Comply with Capitol Region Watershed District (CRWD) standards and Minnesota Pollution Control Agency (MPCA) regulations.
- Align with Minnesota Department of Transportation (MnDOT) State Aid standards, the City of Saint Paul's design requirements, and Ramsey County objectives.
- Engage community members and businesses to incorporate local